

**GFI1B Antibody (C-term)**  
**Affinity Purified Rabbit Polyclonal Antibody (Pab)**  
**Catalog # AP20437b****Specification**

---

**GFI1B Antibody (C-term) - Product Information**

Application	WB,E
Primary Accession	<a href="#">Q5VTD9</a>
Other Accession	<a href="#">O70237</a>
Reactivity	Human, Mouse
Host	Rabbit
Clonality	Polyclonal
Isotype	Rabbit IgG
Calculated MW	37492
Antigen Region	302-330

**GFI1B Antibody (C-term) - Additional Information****Gene ID** 8328**Other Names**

Zinc finger protein Gfi-1b, Growth factor independent protein 1B, Potential regulator of CDKN1A translocated in CML, GFI1B

**Target/Specificity**

This GFI1B antibody is generated from rabbits immunized with a KLH conjugated synthetic peptide between 302-330 amino acids from the C-terminal region of human GFI1B.

**Dilution**

WB~~1:1000

E~~Use at an assay dependent concentration.

**Format**

Purified polyclonal antibody supplied in PBS with 0.09% (W/V) sodium azide. This antibody is purified through a protein A column, followed by peptide affinity purification.

**Storage**

Maintain refrigerated at 2-8°C for up to 2 weeks. For long term storage store at -20°C in small aliquots to prevent freeze-thaw cycles.

**Precautions**

GFI1B Antibody (C-term) is for research use only and not for use in diagnostic or therapeutic procedures.

**GFI1B Antibody (C-term) - Protein Information****Name** GFI1B

**Function** Essential proto-oncogenic transcriptional regulator necessary for development and differentiation of erythroid and megakaryocytic lineages. Component of a RCOR-GFI-KDM1A-HDAC complex that suppresses, via histone deacetylase (HDAC) recruitment, a number of genes implicated in multilineage blood cell development and controls hematopoietic differentiation. Transcriptional repressor or activator depending on both promoter and cell type context; represses promoter activity of SOCS1 and SOCS3 and thus, may regulate cytokine signaling pathways. Cooperates with GATA1 to repress target gene transcription, such as the apoptosis regulator BCL2L1; GFI1B silencing in leukemic cell lines markedly increase apoptosis rate. Inhibits down-regulation of MYC and MYB as well as the cyclin-dependent kinase inhibitor CDKN1A/P21WAF1 in IL6-treated myelomonocytic cells. Represses expression of GATA3 in T-cell lymphomas and inhibits GATA1-mediated transcription; as GATA1 also mediates erythroid GFI1B transcription, both GATA1 and GFI1B participate in a feedback regulatory pathway controlling the expression of GFI1B gene in erythroid cells. Suppresses GATA1-mediated stimulation of GFI1B promoter through protein interaction. Binds to gamma-satellite DNA and to its own promoter, auto-repressing its own expression. Alters histone methylation by recruiting histone methyltransferase to target genes promoters. Plays a role in heterochromatin formation.

**Cellular Location**

Nucleus.

**Tissue Location**

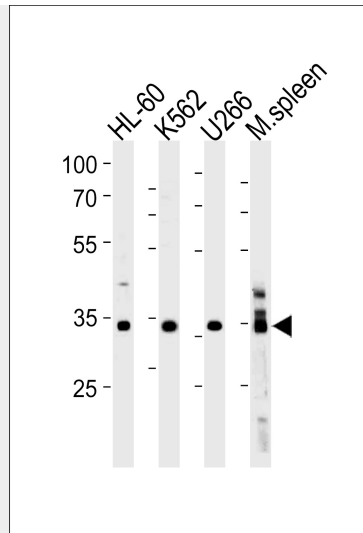
Expressed in bone marrow and fetal liver, but also detectable in fetal spleen, fetal thymus, and testes. Detected in hematopoietic stem cells, erythroblasts, and megakaryocytes Overexpressed in bone marrow of patients with erythroleukemia and megakaryocytic leukemia as well as in their corresponding leukemic cell lines, and markedly repressed in severe aplastic anemia (SAA)

**GFI1B Antibody (C-term) - Protocols**

Provided below are standard protocols that you may find useful for product applications.

- [Western Blot](#)
- [Blocking Peptides](#)
- [Dot Blot](#)
- [Immunohistochemistry](#)
- [Immunofluorescence](#)
- [Immunoprecipitation](#)
- [Flow Cytometry](#)
- [Cell Culture](#)

**GFI1B Antibody (C-term) - Images**



GFI1B Antibody (C-term) (Cat. #AP20437b) western blot analysis in HL-60, K562, U266 cell line and mouse spleen lysates (35ug/lane). This demonstrates the GFI1B antibody detected the GFI1B protein (arrow).

#### **GFI1B Antibody (C-term) - Background**

Essential proto-oncogenic transcriptional regulator necessary for development and differentiation of erythroid and megakaryocytic lineages. Component of a RCOR-GFI-KDM1A-HDAC complex that suppresses, via histone deacetylase (HDAC) recruitment, a number of genes implicated in multilineage blood cell development and controls hematopoietic differentiation. Transcriptional repressor or activator depending on both promoter and cell type context; represses promoter activity of SOCS1 and SOCS3 and thus, may regulate cytokine signaling pathways. Cooperates with GATA1 to repress target gene transcription, such as the apoptosis regulator BCL2L1; GFI1B silencing in leukemic cell lines markedly increase apoptosis rate. Inhibits down-regulation of MYC and MYB as well as the cyclin-dependent kinase inhibitor CDKN1A/P21WAF1 in IL6-treated myelomonocytic cells. Represses expression of GATA3 in T-cell lymphomas and inhibits GATA1-mediated transcription; as GATA1 also mediates erythroid GFI1B transcription, both GATA1 and GFI1B participate in a feedback regulatory pathway controlling the expression of GFI1B gene in erythroid cells. Suppresses GATA1-mediated stimulation of GFI1B promoter through protein interaction. Binds to gamma-satellite DNA and to its own promoter, auto-repressing its own expression. Alters histone methylation by recruiting histone methyltransferase to target genes promoters. Plays a role in heterochromatin formation.

#### **GFI1B Antibody (C-term) - References**

- Roedel B., et al. Genomics 54:580-582(1998).
- Huang D.Y., et al. Nucleic Acids Res. 32:3935-3946(2004).
- Halleck A., et al. Submitted (JUN-2004) to the EMBL/GenBank/DDBJ databases.
- Humphray S.J., et al. Nature 429:369-374(2004).
- Mural R.J., et al. Submitted (JUL-2005) to the EMBL/GenBank/DDBJ databases.